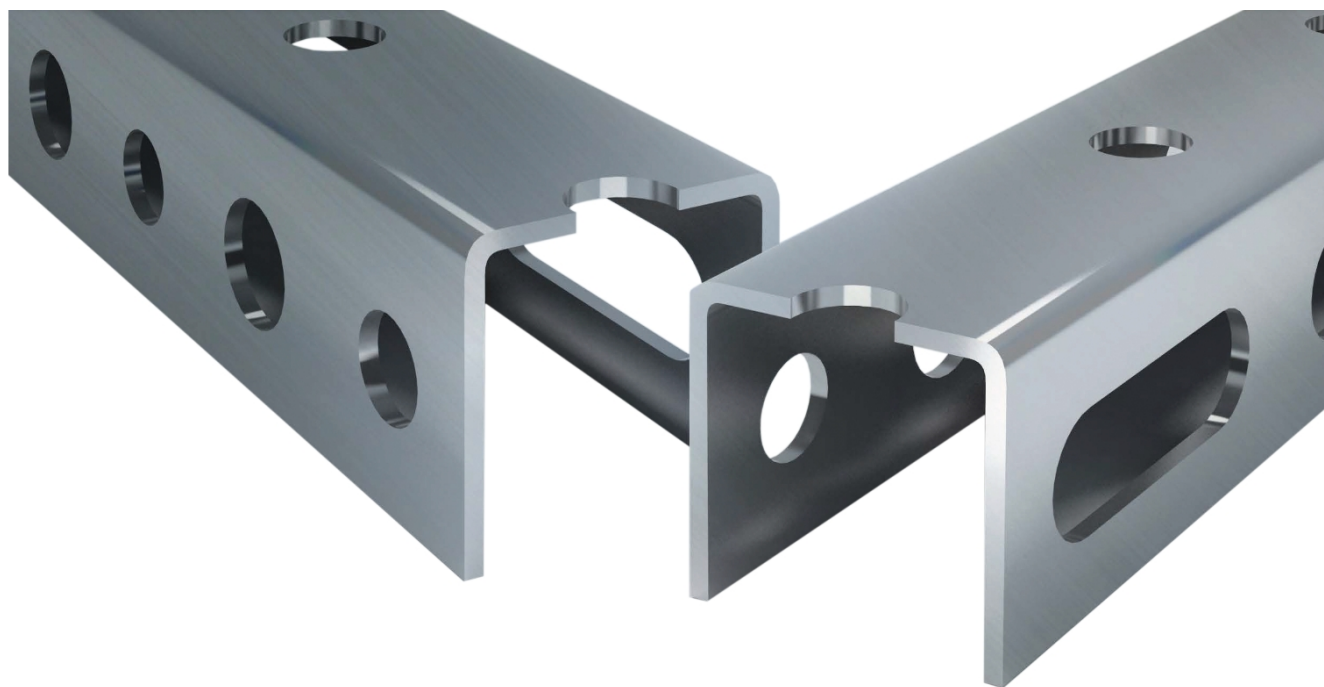


MU-MONTAGEPROFILE



Status	Symbol	Dimensionen	Blechdicke
	30 x 30 x 30/2.0	30 x 30	2,0
	30 x 30 x 30/3.0	30 x 30	3,0



LANDSBERG
STEEL PROFILES

KONTAKT

+48 58 582 51 41
biuro@landsberg.pl

ADRES SIEDZIBY FIRMY I FABRYKI

LANDSBERG sp. z o.o. sp. k.
Wolental 15 i
83-213 Skórcz, Polska